

Baja SAE Engine Conversion Overview

Kohler Engines Baja Team

KOHLER
IN POWER. SINCE 1920.

Internal Communication: For internal & partner use only.

This confidential information is the exclusive property of the Kohler Company and any use, duplication, or transmittal to others without written permission from the Kohler Company, is prohibited. All rights of design or invention are reserved.

KOHLERPOWER.COM / 1

Modifications to Document

- **Page 12**

- Governor locking nut torque removed, replaced with “Loosen the governor pivot nut to allow free movement of the governor lever.”

Add/Delete to BOM



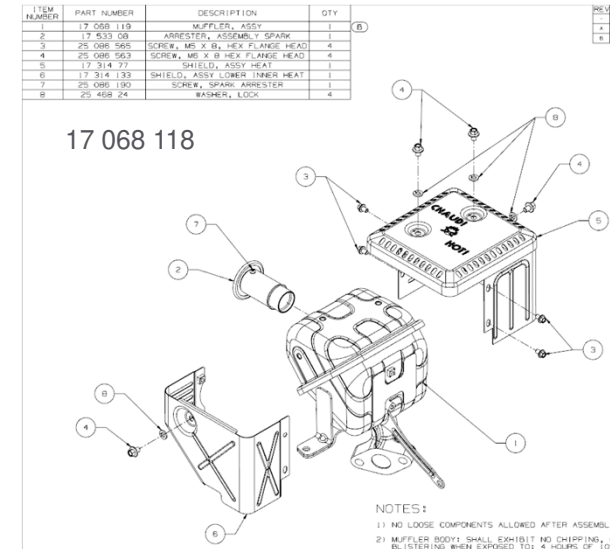
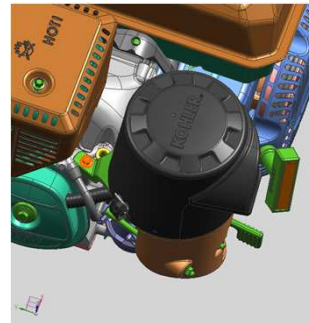
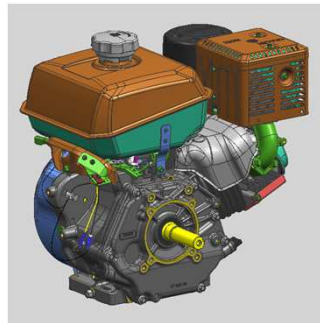
Internal Communication: For internal & partner use only.

This confidential information is the exclusive property of the Kohler Company and any use, duplication, or transmittal to others without written permission from the Kohler Company, is prohibited. All rights of design or invention are reserved.

[KOHLERPOWER.COM](https://www.kohlerpower.com) / 3

Muffler Conversion

- Delete
 - 17 068 95 - basic muffler
 - Intake Manifold Mounting Screw
- Add
 - 17 068 118- Muffler with support bracket + hardware



BOM for material:		17 068 118-S	MUFFLER ASSY, WITH SHIELD	
Level:		1		
BOM Text:		<none>		
Alt. Text:		<none>		
SeqNbr	Component	Quantity	ItmCat	Description
0010	17 068 118	1.000	L	MUFFLER ASSY, WITH SHIELD
0020	17 041 64	1.000	L	GASKET, EXHAUST
0030	17 468 42	2.000	L	WASHER, LOCK
0040	25 086 605	2.000	L	SCREW, M10 X 40
0050	25 600 09	1.000	L	BAG, POLY PLAIN 4x6"x 4MIL (PLW-2001)
0060	25 373 23	1.000	L	FILM, BUBBLE
0070	25 602 29	1.000	L	CARTON
0080	25 113 64	1.000	L	LABEL, 2.75 X 1.6875 (CKY)
0090	25 373 20	2.000	L	PAD, CORRUGATED (PAW-322)
0100	17 046 03	1.000	L	POST, MUFFLER BRACKET
0110	25 600 09	1.000	L	BAG, POLY PLAIN 4x6"x 4MIL (PLW-2001)
0120	25 086 241	1.000	L	SCREW, M8 X 55

KOHLER
IN POWER. SINCE 1920.

Internal Communication: For internal & partner use only.

This confidential information is the exclusive property of the Kohler Company and any use, duplication, or transmittal to others without written permission from the Kohler Company, is prohibited. All rights of design or invention are reserved.

KOHLERPOWER.COM / 4

Engine Conversion



Start with a Kohler CH440-3302 Basic Spec.



KOHLER
IN POWER. SINCE 1920.

Internal Communication: For internal & partner use only.

This confidential information is the exclusive property of the Kohler Company and any use, duplication, or transmittal to others without written permission from the Kohler Company, is prohibited. All rights of design or invention are reserved.

KOHLERPOWER.COM / 5

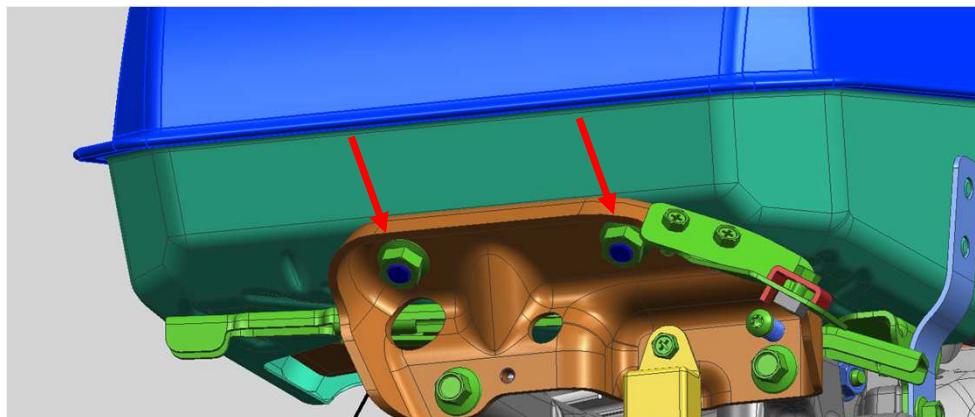
Engine Conversion - Muffler

- Remove existing muffler.
 - Remove (2) 25 086 605 Fasteners.
- Retain existing exhaust gasket.



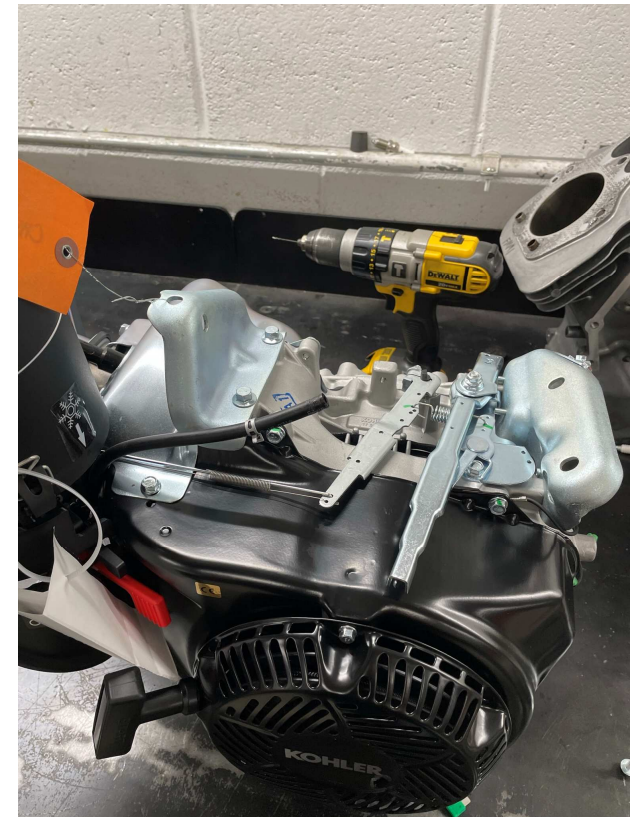
Engine Conversion – Fuel Tank Removal

- Remove (2) nuts from fuel tank mount on speed control bracket.
- Remove (1) fastener from muffler side of fuel tank.
- Remove (1) fastener from governor return mounting location.



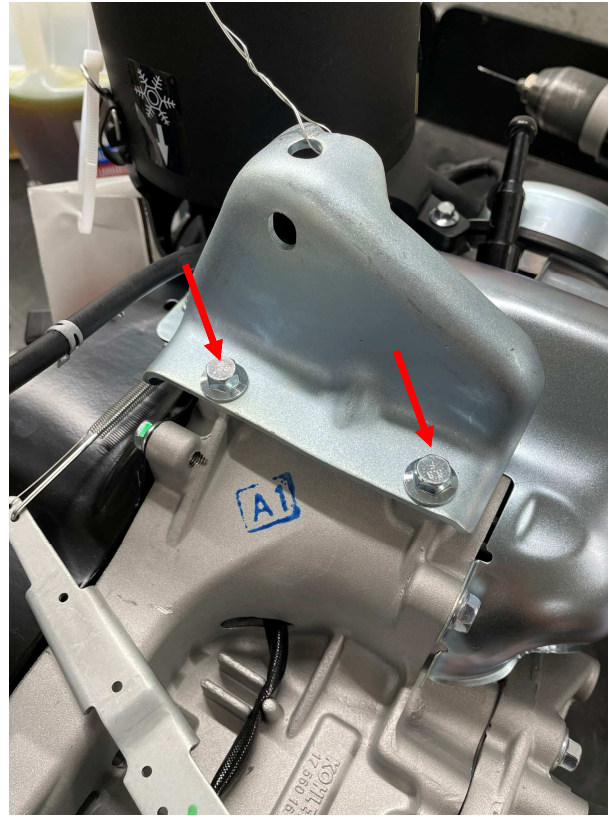
Engine Conversion – Fuel Tank Removal

- Lift fuel tank and remove clamp from fuel tank fitting.
- Remove fuel hose from fuel tank.



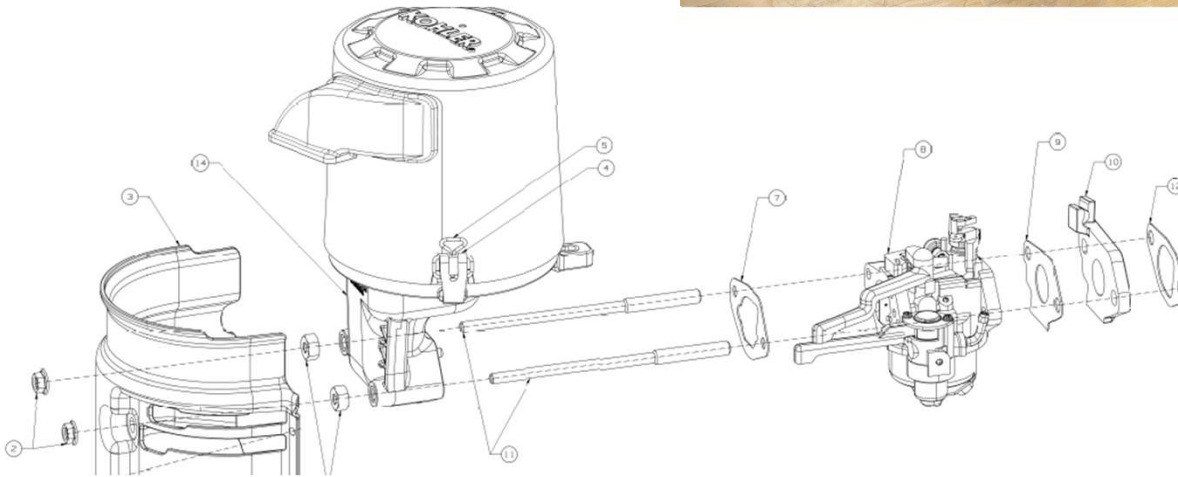
Engine Conversion – Fuel Tank Support Removal

- Remove (2) fuel tank bracket screws
- Remove fuel tank support bracket.
- Will no longer use



Restrictor Plate Installation

- Remove air cleaner cover and air filter element.
- Remove (2) air cleaner base mounting nuts and remove air cleaner base.
- Remove carburetor assembly.
- Remove carburetor heat deflector assembly.



KOHLER
IN POWER. SINCE 1920.

Internal Communication: For internal & partner use only.

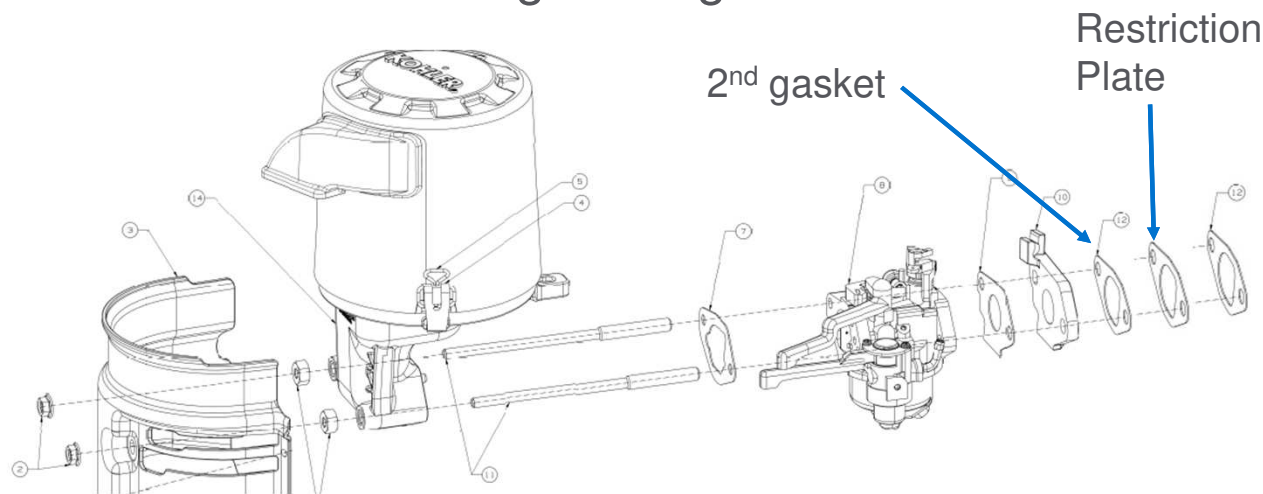
This confidential information is the exclusive property of the Kohler Company and any use, duplication, or transmittal to others without written permission from the Kohler Company, is prohibited. All rights of design or invention are reserved.

KOHLERPOWER.COM / 10

Restrictor Plate Installation

- Leave gasket on cylinder head.
- Install restrictor plate.
- Add gasket between restriction plate and spacer
- Reinstall carburetor and air intake assembly in reverse order. Secure (2) shroud nuts tightening to 35 in-lbs.

Make sure the “tab” Orientation matches the picture below for both gasket and restriction plate



KOHLER
IN POWER. SINCE 1920.

Internal Communication: For internal & partner use only.

This confidential information is the exclusive property of the Kohler Company and any use, duplication, or transmittal to others without written permission from the Kohler Company, is prohibited. All rights of design or invention are reserved.

KOHLERPOWER.COM / 11

Governor System Adjustment

SPEED CONTROL

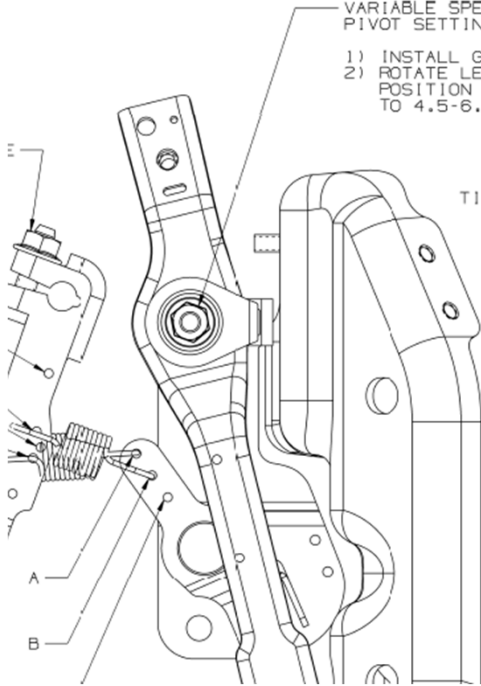
VARIABLE SPEED CONTROL PIVOT SETTINGS:

- 1) INSTALL GOVERNOR SPRING
- 2) ROTATE LEVER TO HIGH SPEED POSITION AND TIGHTEN NUT TO 4.5-6.0 N-m.

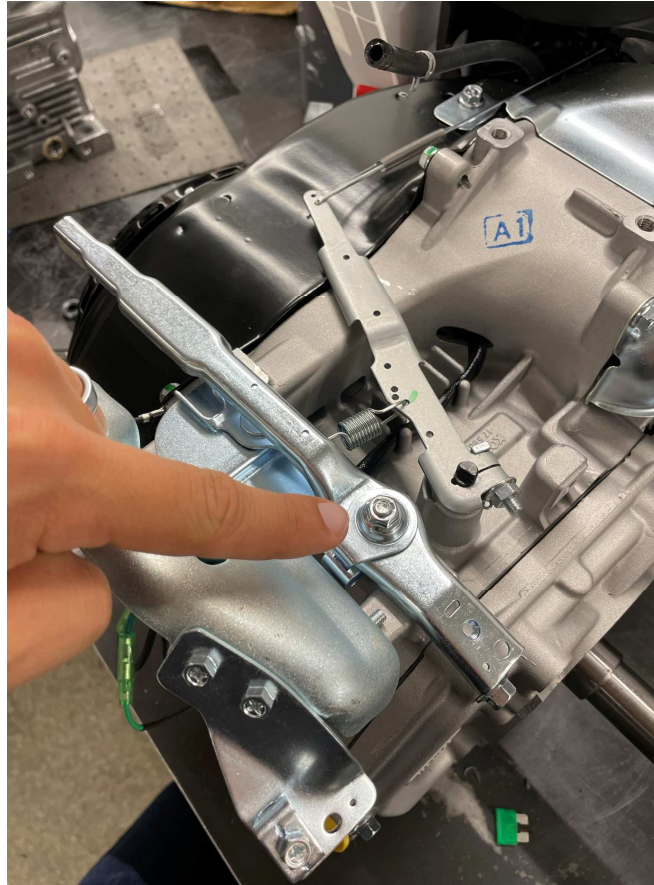
TIGHTEN NUT TO 7-9 N-m

(A)

1
2
5
3
4



Loosen the governor pivot nut to allow free movement of the governor lever.



KOHLER
IN POWER. SINCE 1920.

Internal Communication: For internal & partner use only.

This confidential information is the exclusive property of the Kohler Company and any use, duplication, or transmittal to others without written permission from the Kohler Company, is prohibited. All rights of design or invention are reserved.

KOHLERPOWER.COM / 12

Installation of Throttle Spring Return Bracket

Install 17 126 220 remote control bracket using 25 086 433 M6 x 14 fastener.

You can use the optional HD return spring PN 17 089 101 as an alternative



KOHLER
IN POWER. SINCE 1920.

Internal Communication: For internal & partner use only.

This confidential information is the exclusive property of the Kohler Company and any use, duplication, or transmittal to others without written permission from the Kohler Company, is prohibited. All rights of design or invention are reserved.

KOHLERPOWER.COM / 13

Installation of High Vibration Muffler



Install exhaust spacer and fastener provided with muffler.



Secure using existing baffle fastener.

KOHLER
IN POWER. SINCE 1920.

Internal Communication: For internal & partner use only.

This confidential information is the exclusive property of the Kohler Company and any use, duplication, or transmittal to others without written permission from the Kohler Company, is prohibited. All rights of design or invention are reserved.

KOHLERPOWER.COM / 14