

CH440 - COMMAND PRO SINGLE-CYL (CH)

Last update 30/08/2022

Print date 02/09/2022

Spec CH440-3302	Description CH440 - Command PRO Single-Cyl (CH)
-----------------	---

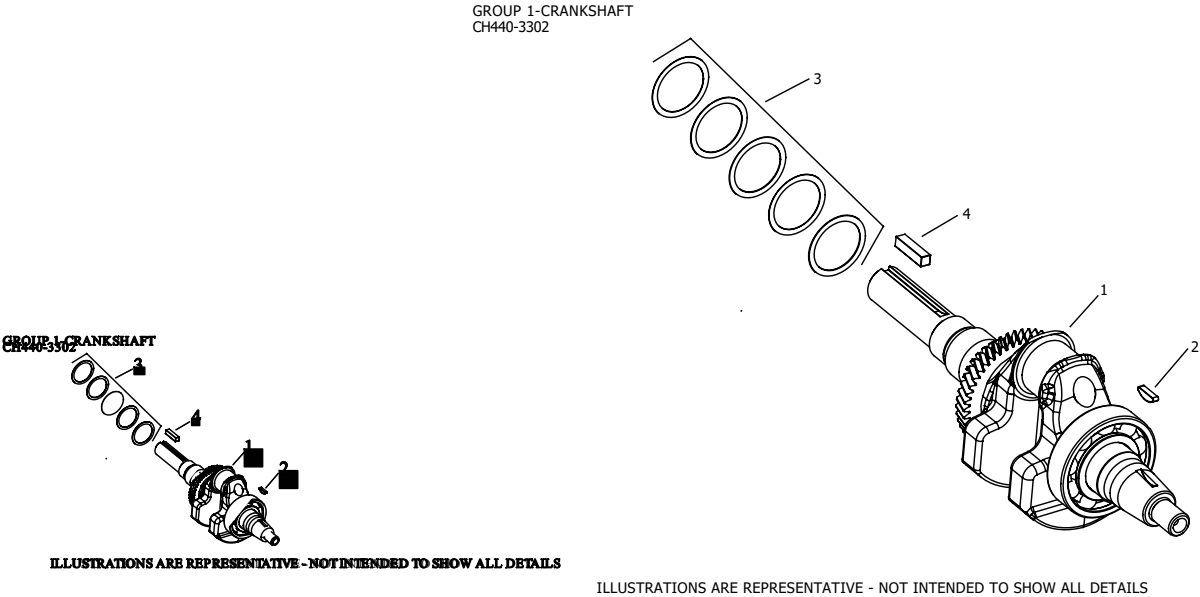
Specification attributes			
Horse power	14	OEM	Basic
Idle speed	RPM-1800	Governor spring hole location	NA
High speed	RPM-3750	Emission code	E16 - China,EPA,ARB,EU Stage 5
Status	NA		


Group list

Group	Description
01	CrankShaft
02	CrankCase
03	Lubrication
04	CylinderHead/Breather
05	Ignition/Charging
06	Blower Housing
07	Starting
08	Fuel System
09	Engine Controls
10	Air Intake
11	Exhaust
12	Identification
14	Blocks,Gasket Set,Replacement
15	Carb Repair Kits
17	Maintenance-Fast Moving Parts
18	Owners/Service Manual
19	Sensors

20	Sealant, Thread Lock, Lubricate
----	---------------------------------

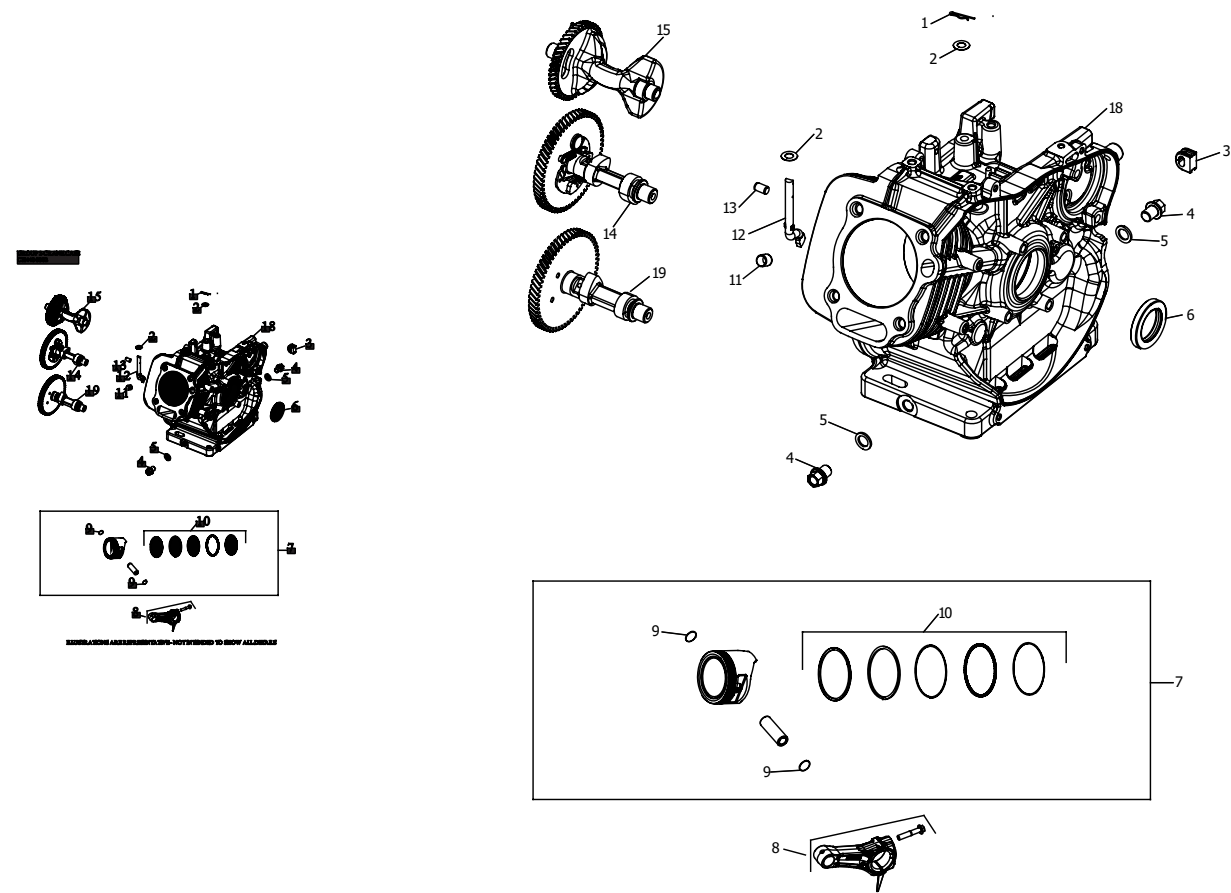
CrankShaft



CrankShaft - Group: 01								
Pos	Kit	Included in	Part #	Description	Note	QTY	MSRP (USD)	Tech info
1			17 014 207-S	CRANKSHAFT ASSEMBLY		1	169.93	
2			14 340 01-S	KEY, FLYWHEEL		1	2.14	
3			17 755 11-S	KIT, SHIM-(#DSC)		4	5.32	
4			25 340 06-S	KEY, SQUARE		1	1.88	

CrankCase

GROUP 2-CRANKCASE
CH440-3302



ILLUSTRATIONS ARE REPRESENTATIVE - NOT INTENDED TO SHOW ALL DETAILS

CrankCase - Group: 02

Pos	Kit	Included in	Part #	Description	Note	QTY	MSRP (USD)	Tech info
1			14 154 01-S	CLIP, GOVERNOR SHAFT		1	1.72	
2			17 468 36-S	WASHER, FLAT		2	1.80	
3			17 313 13-S	GROMMET, CRANKCASE		1	1.88	
4			17 139 05-S	KIT, DRAIN PLUG		2	4.95	
5			17 468 17-S	WASHER, DRAIN PLUG		2	1.80	

6	17 032 27-S	SEAL, CRANKSHAFT	2	7.14	
7	17 874 11-S	KIT, PISTON W/RING SET (STD)	1	106.45	
7	17 874 12-S	KIT, PISTON (0.25 O.S.)	1	111.96	
8	17 067 14-S	ROD, CONNECTING ASSEMBLY	1	37.04	
9	17 018 09-S	RETAINER, PISTON	2	2.63	
10	17 108 07-S	RING SET	2	36.42	
11	17 380 16-S	PIN, DOWEL CYLINDER HEAD	2	1.73	
12	17 144 09-S	SHAFT, GOVERNOR CROSS	1	8.89	
13	17 380 21-S	PIN, DOWEL	2	1.73	
14	17 010 22-S	CAMSHAFT ASSEMBLY	1	99.82	
15	17 144 17-S	SHAFT, BALANCE	1	38.36	
18	17 561 57-S	CRANKCASE	1	407.06	

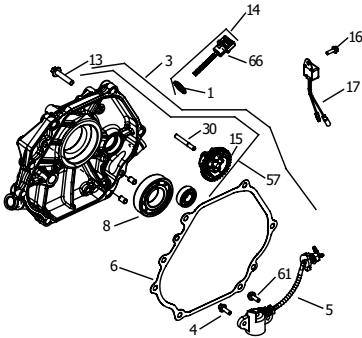
Lubrication

GROUP 3-LUBRICATION
CH440-3302

GROUP 3-LUBRICATION
CH440-3302



ILLUSTRATIONS ARE REPRESENTATIVE - NOT INTENDED TO SHOW ALL DETAILS



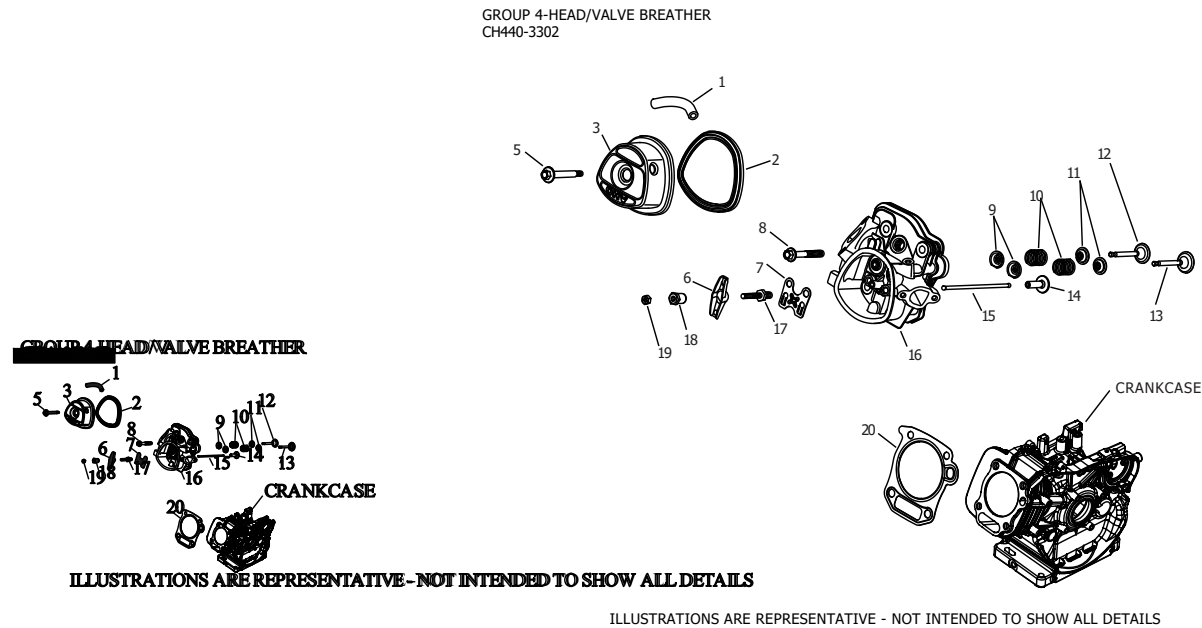
ILLUSTRATIONS ARE REPRESENTATIVE - NOT INTENDED TO SHOW ALL DETAILS

Lubrication - Group: 03

Pos	Kit	Included in	Part #	Description	Note	QTY	MSRP (USD)	Tech info
1			17 032 05-S	SEAL, DIPSTICK		1	2.37	
3			17 009 41-S	KIT, CLOSURE PLATE ASSEMBLY	BEFORE S/N 4727100011	1	262.17	
4			25 086 223-S	SCREW, M6 X18		2	1.80	



5	17 099 05-S	SWITCH, OIL SENSOR ASSEMBLY		1	36.00
6	17 041 32-S	GASKET, CLOSURE PLATE	BEFORE S/N 4727100011	1	20.34
8	17 030 34-S	BEARING, BALL		2	39.19
13	25 086 230-S	SCREW, CLOSURE PLATE		7	1.80
14	17 038 08-S	DIPSTICK ASSEMBLY		2	4.94
15	17 310 04-S	GOVERNOR ASSEMBLY		1	28.39
16	25 086 244-S	SCREW, HEX/PHILLIPS M5		4	1.73
17	17 526 04-S	CONTROL, OIL ALERT UNIT		1	58.51
30	17 144 06-S	SHAFT, GOVERNOR GEAR		1	11.03
57	17 009 120-S	PLATE, CLOSURE & BEARING	AFTER S/N 4727100001 USES RTV SEALANT	1	272.97
61	25 086 337-S	SCREW, M6 X 16		2	1.81
66	17 038 01-S	DIPSTICK - USE 17 038 08-S		1	2.85

CylinderHead/Breather



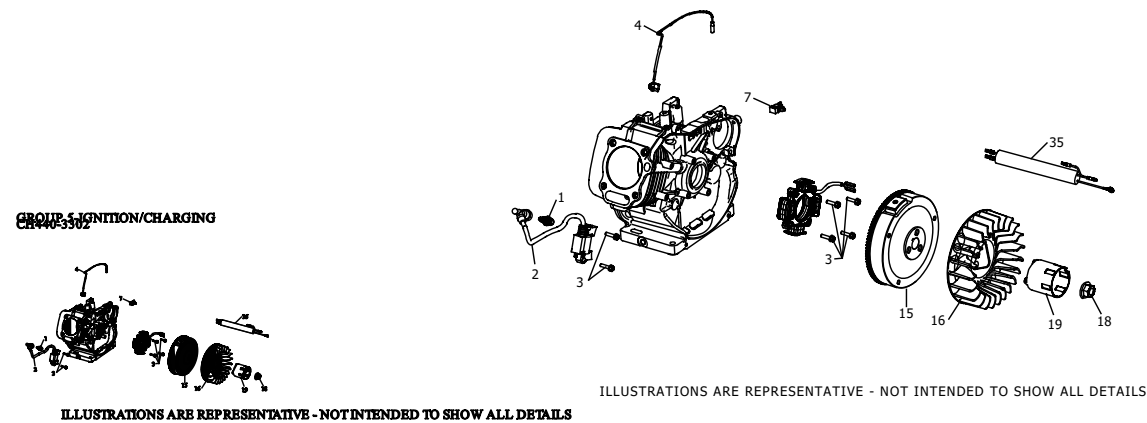
CylinderHead/Breather - Group: 04

Pos	Kit	Included in	Part #	Description	Note	QTY	MSRP (USD)	Tech info
1			17 123 90-S	TUBE, BREATHER		1	8.55	
2			17 041 52-S	GASKET, VALVE COVER		1	7.40	
3			17 096 15-S	KIT, VALVE COVER ASSEMBLY		1	17.85	
5			25 086 310-S	SCREW, VALVE COVER SEAL ASSY		1	3.84	

6	17 186 05-S	ARM, ROCKER	2	7.09	
7	17 146 10-S	PLATE, PUSHROD GUIDE	1	5.81	
8	25 086 234-S	SCREW, HEX FLANGE CYLINDER HEAD	4	1.88	
9	17 018 08-S	RETAINER, VALVE SPRING	2	3.87	
10	17 089 52-S	SPRING, VALVE	2	6.75	
11	17 032 25-S	SEAL, VALVE STEM	2	7.90	
12	17 016 09-S	VALVE, EXHAUST	1	31.60	
13	17 017 07-S	VALVE, INTAKE	1	24.71	
14	17 351 03-S	LIFTER, VALVE	2	8.78	
15	17 411 07-S	ROD, PUSH-(#1741110S)	2	3.68	
16	17 318 03-S	KIT, HEAD ASSY	1	104.51	
17	14 072 02-S	STUD, ROCKER ARM-USE 14 072 22-S	2	3.34	
18	14 599 01-S	PIVOT, ROCKER ARM	2	1.89	
19	14 100 01-S	NUT, HEX JAM	2	1.72	
20	17 841 73-S	KIT, HEAD GASKET	1	25.32	

Ignition/Charging

GROUP 5-IGNITION/CHARGING
CH440-3302



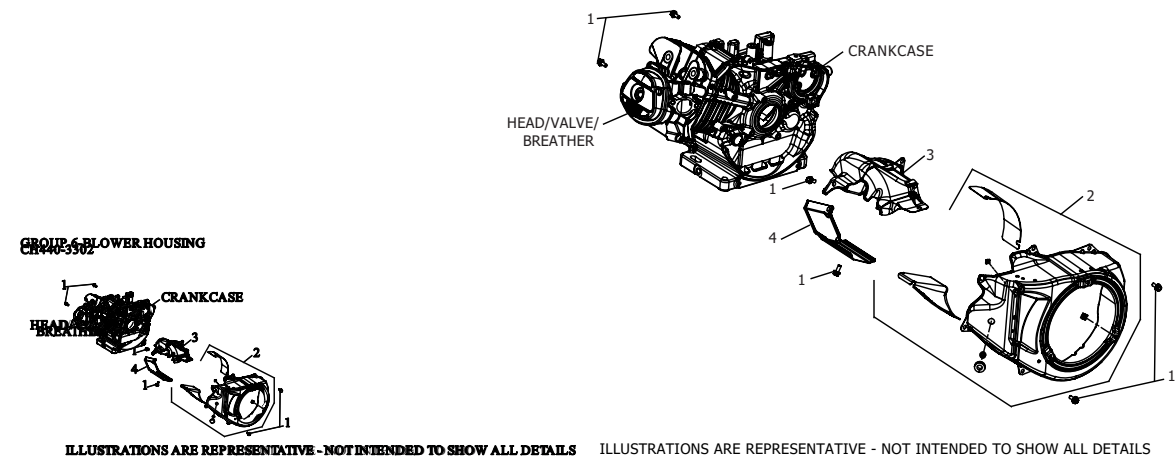
Ignition/Charging - Group: 05

Pos	Kit	Included in	Part #	Description	Note	QTY	MSRP (USD)	Tech info
1			25 132 19-S	SPARK PLUG		1	11.13	
2			17 584 03-S	MODULE, IGNITION		1	50.16	
3			25 086 186-S	SCREW, M6 X 25-(#25086436S)		2	1.25	
4			17 518 06-S	LEAD, GROUND TO KILL		1	6.14	
7			17 154 09-S	CLIP, WIRE HARNESS		1	2.44	

15	17 025 06-S	FLYWHEEL, ASSEMBLY CAST IRON	1	137.64
16	17 157 05-S	FAN, FLYWHEEL	1	13.37
18	17 100 24-S	NUT, FLYWHEEL	1	6.46
19	17 109 07-S	CUP, STARTER DRIVE	1	22.53
35	17 518 15-S	LEAD, MICROSWITCH	1	11.27

Blower Housing

GROUP 6-BLOWER HOUSING
CH440-3302

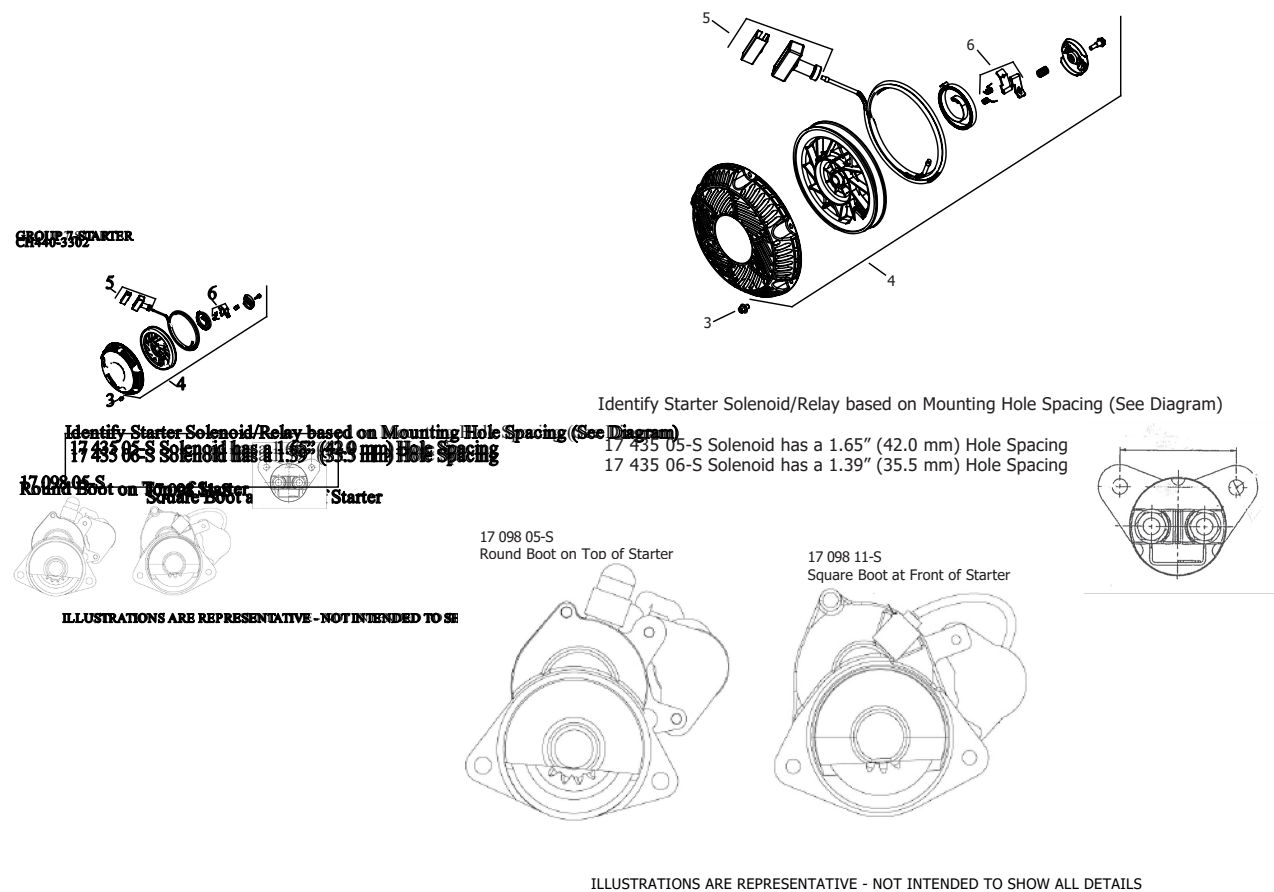


Blower Housing - Group: 06

Pos	Kit	Included in	Part #	Description	Note	QTY	MSRP (USD)	Tech info
1			25 086 159-S	SCREW, HEX FLANGE (M6)-USE 25 086 433-S		11	1.12	
2			17 027 68-S	HOUSING, BLOWER ASSEMBLY		1	82.73	
3			17 314 55-S	SHIELD, UPPER HEAT		1	17.95	
4			17 314 30-S	SHIELD, CYLINDER HEAD		1	5.72	

Starting

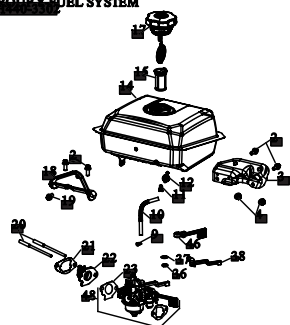
GROUP 7-STARTER
CH440-3302



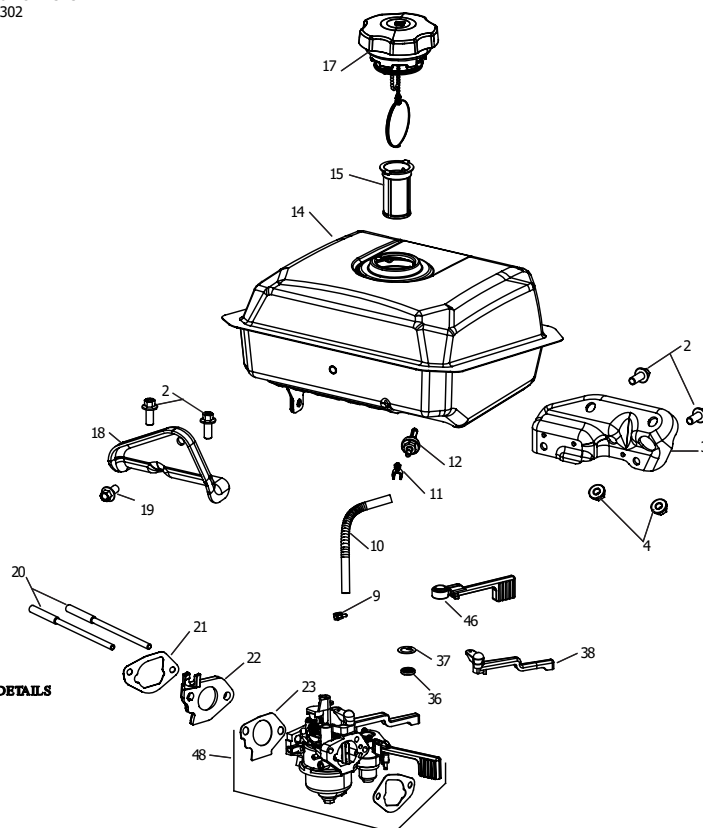
Starting - Group: 07

Pos	Kit	Included in	Part #	Description	Note	QTY	MSRP (USD)	Tech info
3			25 086 648-S	SCREW, M6 X 8 HEX FLANGE HEAD		3	1.75	
4			17 165 11-S	RETRACTABLE STARTER ASSY- (#1716522S)		1	71.89	
5			17 166 06-S	KIT, HANDLE		1	4.14	
6			17 379 03-S	KIT, PAWL REPAIR		1	9.00	

Fuel System


GROUP 8-FUEL SYSTEM
CH440-3302







ILLUSTRATIONS ARE REPRESENTATIVE - NOT INTENDED TO SHOW ALL DETAILS



ILLUSTRATIONS ARE REPRESENTATIVE - NOT INTENDED TO SHOW ALL DETAILS

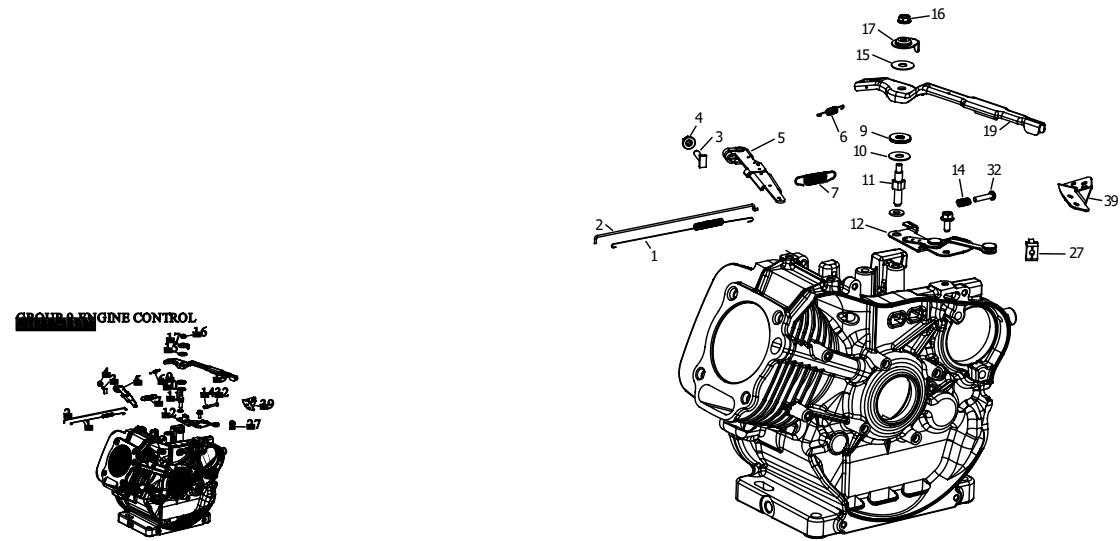
Fuel System - Group: 08

Pos	Kit	Included in	Part #	Description	Note	QTY	MSRP (USD)	Tech info
2			25 086 224-S	SCREW, M8 X 20		4	1.80	
3			17 126 245-S	BRACKET, FUEL SUPPORT ASSEMBLY		1	13.04	
4			M-841080-S	NUT, FLG M8X1.25		2	1.94	
9			14 237 01-S	CLAMP, FUEL LINE		2	1.78	
10			25 111 40-S	LINE, FUEL (10"-CUT TO LENGTH)		1	6.12	

11	17 154 08-S	CLIP, FUEL HOSE	1	1.80	
12	17 294 05-S	FITTING, FUEL ASSY	1	5.81	
14	17 065 87-S	TANK, FUEL	1	106.06	
15	17 050 20-S	FILTER, FUEL TANK	1	4.07	
17	17 173 49-S	CAP, FUEL ASSEMBLY	1	38.69	
18	17 126 159-S	BRACKET, FUEL SUPPORT	1	8.89	
19	M-851016-S	SCREW, FLG 8X1.25X16	1	5.58	
20	17 072 10-S	STUD, CARBURETOR	2	5.10	
21	17 041 35-S	KIT, GASKET INTAKE	1	13.22	
22	17 168 07-S	KIT, INSULATOR	1	5.66	
23	17 041 36-S	GASKET, CARB TO INSULATOR	1	2.49	
36	17 032 40-S	SEAL, INLET VALVE	1	3.57	
37	17 050 23-S	KIT, FUEL SCREEN	1	1.75	
38	17 090 51-S	LEVER, CHOKE	1	5.68	
46	17 090 87-S	KIT, FUEL SHUTOFF LEVER	1	7.99	
48	17 853 128-S	KIT, CARBURETOR COMPLETE	1	83.71	

Engine Controls

GROUP 9-ENGINE CONTROL
CH440-3302




ILLUSTRATIONS ARE REPRESENTATIVE - NOT INTENDED TO SHOW ALL DETAILS

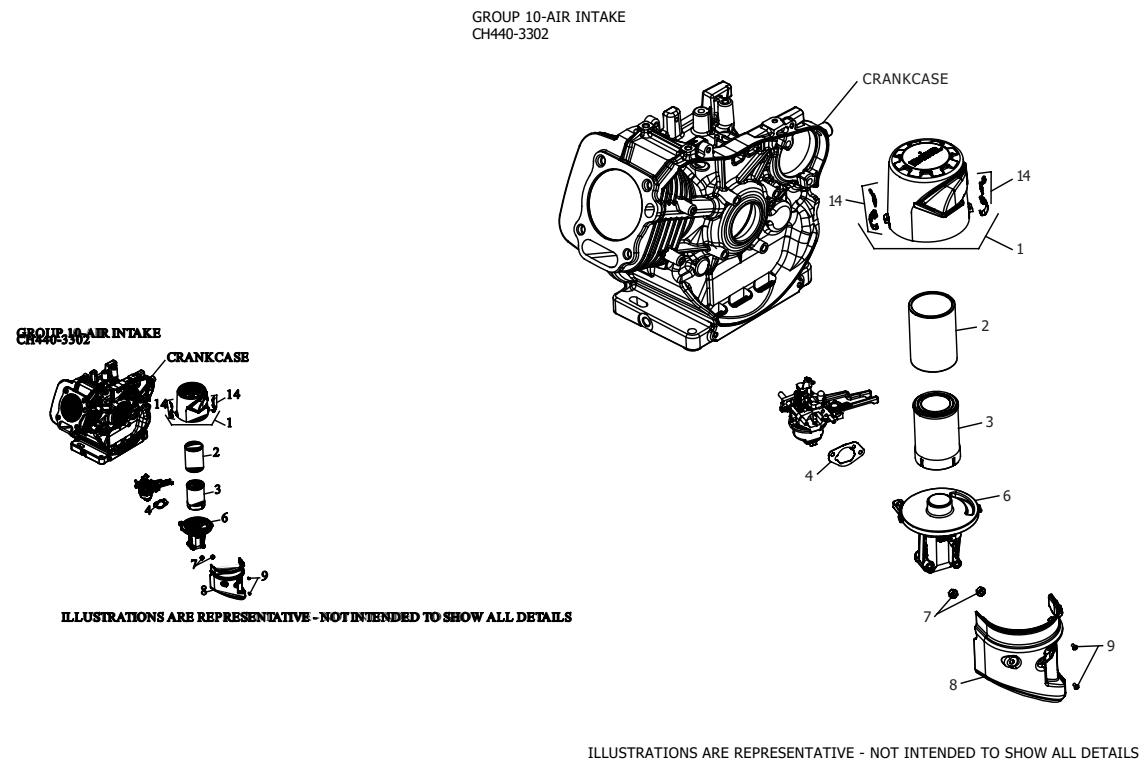
ILLUSTRATIONS ARE REPRESENTATIVE - NOT INTENDED TO SHOW ALL DETAILS

Engine Controls - Group: 09

Pos	Kit	Included in	Part #	Description	Note	QTY	MSRP (USD)	Tech info
1			17 089 59-S	SPRING, LINKAGE		1	4.86	
2			17 079 03-S	LINKAGE, GOVERNOR		1	2.63	
3			25 086 166-S	SCREW, RECTANGLE HEAD (M6)		1	1.80	
4			14 100 08-S	NUT, HEX FLANGE (M6) - USE 14 100 16-S		3	1.13	


5	17 090 53-S	KIT, GOVERNOR LEVER	1	7.09	
6	17 089 34-S	SPRING, THROTTLE RETURN	1	3.20	
7	17 089 64-S	SPRING, GOVERNOR	1	4.89	
9	25 468 15-S	WASHER, NYLON CONTROL LEVER	1	1.80	
10	17 468 19-S	WASHER, FLAT	1	1.80	
11	17 072 11-S	STUD, CONTROL LEVER	1	2.87	
14	17 089 36-S	SPRING, COMPRESSION	1	4.38	
15	25 468 17-S	WASHER, SPRING	1	1.80	
16	14 100 09-S	NUT, HEX FLANGE LOCK (M6)	1	1.72	
17	17 468 34-S	WASHER, CONTROL LEVER	1	1.75	
19	17 090 22-S	CONTROL LEVER ASSEMBLY	1	18.31	
27	17 237 12-S	CLAMP, CABLE	1	1.84	
32	25 086 270-S	SCREW, SPEED ADJUSTING	1	1.82	
39	17 126 57-S	BRACKET, BOWDEN CABLE ASSY	1	4.96	
NI	17 126 49-S	BRACKET, CONTROLS ASSY	1	10.28	

Air Intake

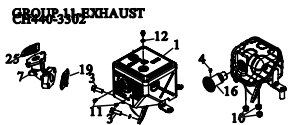
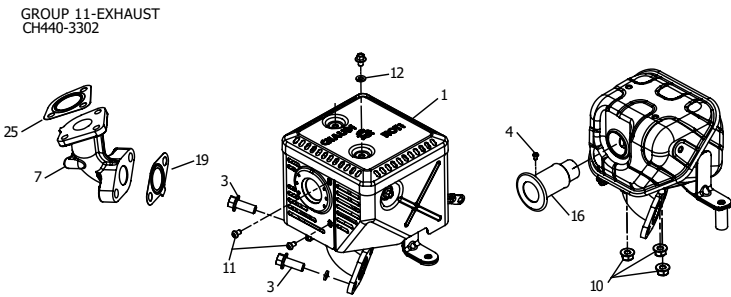


Air Intake - Group: 10

Pos	Kit	Included in	Part #	Description	Note	QTY	MSRP (USD)	Tech info
1			17 096 79-S	COVER, AIR CLEANR ASSEMBLY		1	20.29	
2			17 083 15-S	ELEMENT, PRE-CLEANER		1	5.97	
3			17 083 32-S	ELEMENT, AIR FILTER		1	17.97	
4			17 041 37-S	GASKET, AIR CLEANER		1	2.49	
6			17 094 33-S	AIR CLEANER BASE ASSY		1	22.03	

7	17 100 43-S	NUT, HEX (M6 THREAD, M8 BODY)	2	1.80	
8	17 096 74-S	COVER, A/C/ BASE CH440	1	9.81	
9	25 086 217-S	SCREW,COVR TO BLWR HOUSING	2	1.80	
14	17 344 01-S	KIT, LATCH CLIP	4	5.16	

Exhaust



ILLUSTRATIONS ARE REPRESENTATIVE - NOT INTENDED TO SHOW ALL DETAILS

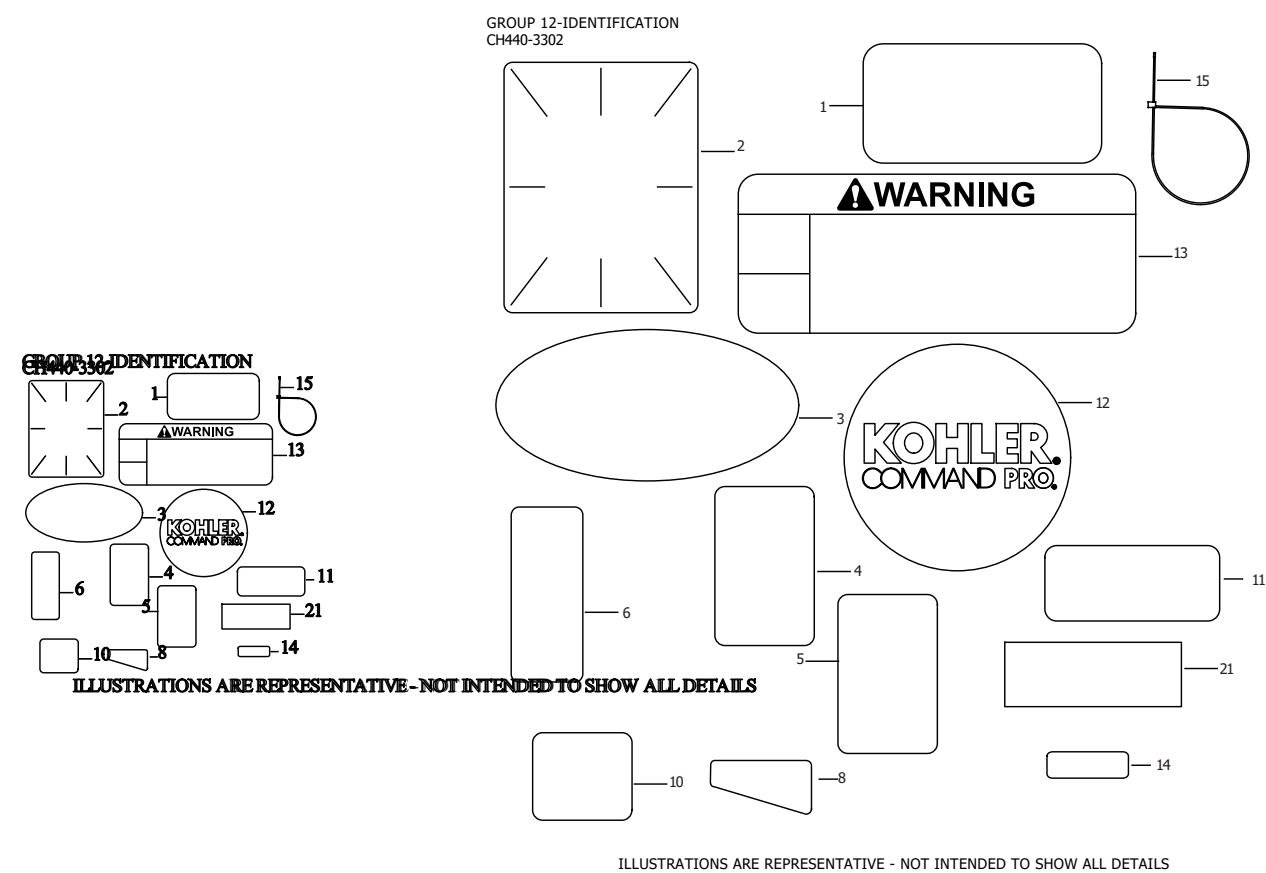
ILLUSTRATIONS ARE REPRESENTATIVE - NOT INTENDED TO SHOW ALL DETAILS

Exhaust - Group: 11

Pos	Kit	Included in	Part #	Description	Note	QTY	MSRP (USD)	Tech info
1			17 068 95-S	KIT, MUFFLER		1	116.55	
3			25 086 605-S	SCREW, M10 X 40		2	1.88	
4			25 086 190-S	SCREW, SPARK ARRESTOR		1	1.73	
7			17 054 03-S	ELBOW, EXHAUST		1	22.06	
10			17 100 54-S	NUT, HEX FLANGE LOCK (M8)		3	4.99	

11	25 086 565-S	SCREW, M5 X 8, HEX FLANGE HEAD	4	1.80
12	17 468 42-S	WASHER, LOCK	2	1.75
16	17 533 08-S	ARRESTOR ASSEMBLY, SPARK	1	16.15
19	17 041 64-S	GASKET, EXHAUST	1	2.74
25	17 041 50-S	GASKET, MUFFLER	1	2.80

Identification



Identification - Group: 12

Pos	Kit	Included in	Part #	Description	Note	QTY	MSRP (USD)	Tech info
1			25 113 75-S	LABEL, MAINTENANCE (CKY)		1	4.16	
2			25 113 79-S	LABEL, CLEAR LAMINATION		1	1.89	
3			17 113 75-S	DECAL, QUAD CLEAN SILVER		1	5.99	
4			17 113 24-S	DECAL, SNOW FLAKE		1	2.56	
5			17 113 23-S	DECAL, SUN		1	2.56	


6	25 113 84-S	DECAL, FUEL/CHOKE - ON/OFF	1	3.60
8	17 113 82-S	DECAL, 14 HP/429cc/CH440	1	4.16
10	17 113 25-S	DECAL, BASE ARROW	1	2.56
11	25 113 74-S	LABEL, CANADIAN COMPLIANCE	1	2.49
11	25 113 76-S	DECAL, ETHANOL WARNING	1	1.84
12	17 113 124-S	LABEL, RECOIL 75MM	1	5.99
13	17 113 16-S	DECAL, WARNING	1	4.16
14	17 113 88-S	DECAL, ENGINE AND FUEL SHUT OFF	1	3.62
15	25 454 05-S	TIE	1	1.94
21	25 113 56-S	DECAL, THROTTLE	1	2.60

Blocks,Gasket Set,Replacement

KOHLER
Engines
GROUP 14
BLOCKS, GASKET SET,
AND
REPLACEMENT ENGINE

KOHLER
Engines
GROUP 14
BLOCKS, GASKET SET,
AND
REPLACEMENT ENGINE




Blocks,Gasket Set,Replacement - Group: 14

Pos	Kit	Included in	Part #	Description	Note	QTY	MSRP (USD)	Tech info
NI			17 755 44-S	KIT, GASKET SET (CH/ECH440)		1	63.50	

Carb Repair Kits

KOHLER
Engines
GROUP 15
FUEL RELATED
REPAIR KITS


KOHLER
Engines
GROUP 15
FUEL RELATED
REPAIR KITS

Carb Repair Kits - Group: 15								
Pos	Kit	Included in	Part #	Description	Note	QTY	MSRP (USD)	Tech info
NI			17 755 09-S	KIT, HIGH ALT (4000-8000 FT)		1	8.13	
NI			17 755 23-S	KIT, HIGH ALT (8,000+ FT)		1	9.53	
NI			17 757 03-S	KIT, CARBURETOR REPAIR		1	16.36	

Maintenance-Fast Moving Parts

KOHLER
 Engines
 GROUP 17
MAINTENANCE
FAST MOVING PARTS
KOHLER
 Engines
 GROUP 17
MAINTENANCE
FAST MOVING PARTS

Maintenance-Fast Moving Parts - Group: 17

Pos	Kit	Included in	Part #	Description	Note	QTY	MSRP (USD)	Tech info
NI			17 050 20-S	FILTER, FUEL TANK		1	4.07	
NI			17 050 23-S	KIT, FUEL SCREEN		1	1.75	
NI			17 083 15-S	ELEMENT, PRE-CLEANER		1	5.97	
NI			17 083 32-S	ELEMENT, AIR FILTER		1	17.97	
NI			25 132 19-S	SPARK PLUG		1	11.13	



NI	25 357 72-S	OIL, QUART, 10W50 KOHLER PRO	1	15.68
----	-------------	------------------------------	---	-------

Owners/Service Manual

KOHLER
 Engines
 GROUP 18
 OWNER/SERVICE
 MANUALS

KOHLER
 Engines
 GROUP 18
 OWNER/SERVICE
 MANUALS

Owners/Service Manual - Group: 18

Pos	Kit	Included in	Part #	Description	Note	QTY	MSRP (USD)	Tech info
NI			17 590 28	OM, CH245-CH440DF AMERICAS/ROW		1	0.00	
NI			17 590 30	OM, CH245-CH440DF GLOBAL		1	0.00	
NI			17 690 01	SM, CH270TF,CH395TF,CH440TF ENGLISH		1	24.95	

NI	17 690 03	SM, CH270TF,CH395TF,CH440TF SPANISH	1	0.00	
NI	17 690 04	SM, CH270TF,CH395TF,CH440TF FR CAN	1	0.00	
NI	17 690 05	SM, CH270TF,CH395TF,CH440TF ITALIAN	1	0.00	
NI	17 690 06	SM, CH270TF,CH395TF,CH440TF CHINESE	1	0.00	
NI	17 690 07	SM, CH270TF,CH395TF,CH440TF RUSSIAN	1	0.00	
NI	17 690 08	SM, CH270TF,CH395TF,CH440TF GERMAN	1	0.00	
NI	17 690 09	SM, CH270TF,CH395TF,CH440TF POLISH	1	0.00	
NI	17 690 10	SM, CH270TF,CH395TF,CH440TF TURKISH	1	0.00	
NI	17 690 11	SM, CH270TF,CH395TF,CH440TF KOREAN	1	0.00	
NI	17 690 12	SM, CH270TF,CH395TF,CH440TF PORTUGUESE	1	0.00	
NI	17 690 13	SM, CH270TF,CH395TF,CH440TF INDONESIAN	1	0.00	
NI	25 590 43	WARRANTY, COMBINED 2020-2022 MY	1	0.00	

Sensors

KOHLER
Engines
GROUP 19
SENSORS

KOHLER
Engines
GROUP 19
SENSORS

Sensors - Group: 19


Pos	Kit	Included in	Part #	Description	Note	QTY	MSRP (USD)	Tech info
NI			17 099 05-S	SWITCH, OIL SENSOR ASSEMBLY		1	36.00	

Sealant,Thread Lock, Lubricate

KOHLER
Engines
GROUP 20
SEALANT,
THREAD LOCK,
AND LUBRICANT

KOHLER
Engines
GROUP 20
SEALANT,
THREAD LOCK,
AND LUBRICANT

Sealant,Thread Lock, Lubricate - Group: 20

Pos	Kit	Included in	Part #	Description	Note	QTY	MSRP (USD)	Tech info
NI			25 357 03-S	QUART OF OIL - SAE30		1	9.79	
NI			25 357 06-S	QUART OF OIL - 10W30-USE 25 357 65-S		1	5.88	
NI			25 357 12-S	LUBRICANT, GREASE (SPLINE)		1	18.35	

NI	25 357 14-S	LUBRICANT, CAMSHAFT	1	1.30	
NI	25 357 41-S	20W50 OIL (QUART)-USE 25 357 68-S	1	6.26	
NI	25 357 72-S	OIL, QUART, 10W50 KOHLER PRO	1	15.68	
NI	25 357 75-S	OIL, 5 QT, 10W50 KOHLER PRO	1	74.95	
NI	25 597 05-S	SEALANT(LOCTITE 620)-(#2559711S)	1	2.50	
NI	25 597 06-S	SEALANT(LOCTITE 222 RETAIN CMPND 0.5ML)	1	3.55	
NI	25 597 07-S	SEALANT(LOCTITE INSTANT GASKET 4 OZ)	1	23.64	
NI	52 357 01-S	LUBRICANT, BENDIX STARTR-DISCONTINUED	1	4.89	