

2023 BAJA SAE Hydraulic Component Spec Sheet

Maximum System Pressure _____

Pump

Type _____
Supplier _____
Model Code _____
Pressure Rating _____

Piston, Gear, Geroler, Geroter, Vane

Motor 1

Type _____
Supplier _____
Model Code _____
Pressure Rating _____

Piston, Gear, Geroler, Geroter

Motor 2

Type _____
Supplier _____
Model Code _____
Pressure Rating _____

Piston, Gear, Geroler, Geroter

Accumulator

Type _____
Supplier _____
Model Code _____
Pressure Rating _____
Pre-Charge _____

Bladder, Diaphragm, Piston

Relief Valve

Supplier _____
Model Code _____
Relief Pressure _____

Plumbing (for tube/pipe)

Outside Diameter _____
Wall Thickness _____
Material _____
Rated Pressure _____

Rated Pressure is 1/4 burst pressure

Requirements:

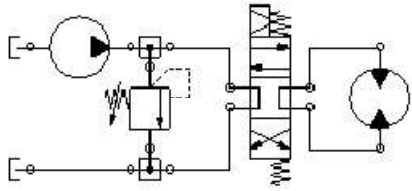
All tubing shall have burst pressure rating 4 times maximum system pressure

Hoses shall have supplier and pressure rating printed on hose

System schematic shall be drawn on page 2 of this document. Follow industry standards for hydraulic symbols (i.e. ISO 1219).

One spec sheet shall be completed for each hydraulic circuit on the vehicle (hydraulic brake circuits are excluded from requiring a spec sheet)

Hydraulic Schematic



Example